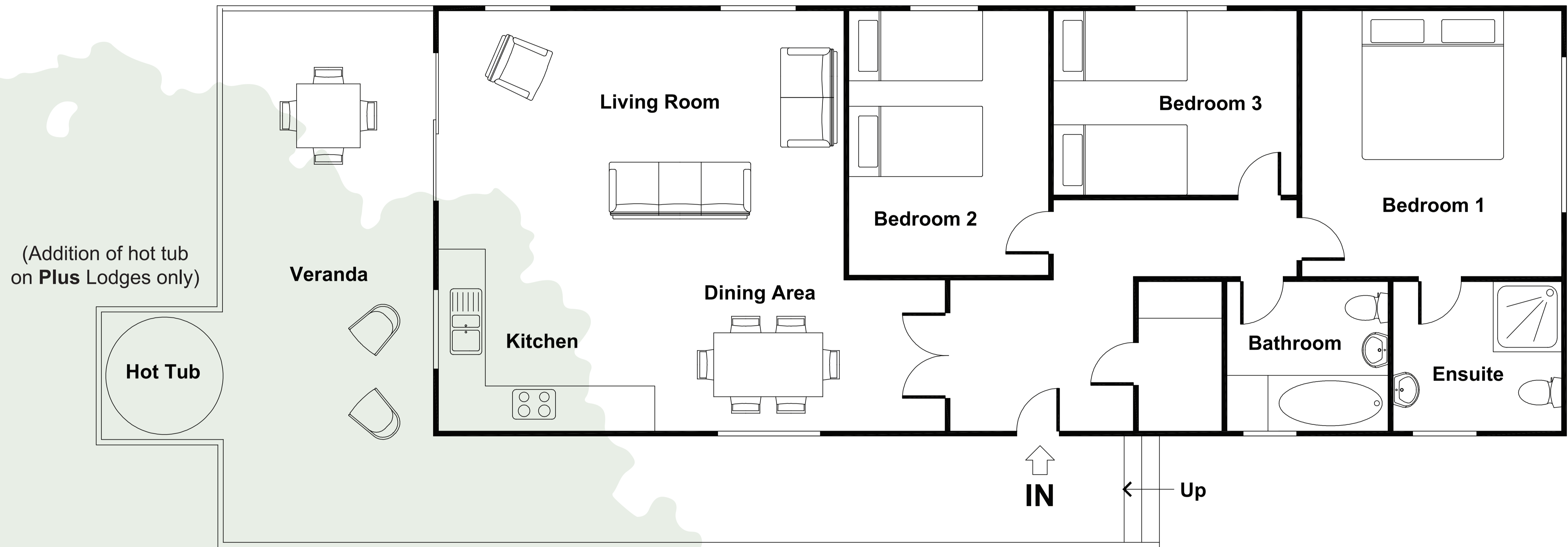


3 BED PLUS LODGE

APPROXIMATE GROSS INTERNAL AREA
TOTAL = 1,013 SQ FT / 94.1 SQ M



THE POSITION AND SIZE OF DOORS, WINDOWS, APPLIANCES AND OTHER FEATURES ARE APPROXIMATE ONLY.

THIS PLAN REPRESENTS THE LAYOUT OF A TYPICAL 3 BED LODGE, OTHER 3 BED LODGES MAY DIFFER.
HOWEVER THEY ALL HAVE 3 BEDROOMS AND 2 BATHROOMS.

